

Gloucestershire Hospitals **NHS**
NHS Foundation Trust


One hospital
with a long
corridor

Dr Sally Pearson
Director of Clinical
Strategy

BETTER FOR YOU

Gloucestershire Hospitals **NHS**
NHS Foundation Trust

About
our Trust



Gloucestershire Hospitals NHS Foundation Trust is one of the largest hospital trusts in the country and provides high quality acute, elective and specialist health care for a population of more than 850,000 people.

We run our services across two main sites:

- Gloucestershire Royal Hospital (GRH)
- Cheltenham General Hospital (CGH)

and also from a range of other locations across the county and beyond.

We are the second largest employer in Gloucestershire, with more than 7,400 employees.

Copyright Gloucestershire Hospitals NHS Foundation Trust 2015

BETTER FOR YOU

Gloucestershire Hospitals NHS Foundation Trust

NHS providers in the county

Gloucestershire Clinical Commissioning Group

Gloucestershire CCG (GCCG)

Are responsible for buying local NHS services such as emergency care services, operations or treatments that can be planned in advance and mental health services.



2gether NHS Foundation Trust

2gether NHS Foundation Trust

Provides specialist mental health and learning disability services to the people of Gloucestershire, Herefordshire and our surrounding region.

Gloucestershire Care Services NHS Trust

Gloucestershire Care Services NHS Trust

Run the county's community hospitals, provide nursing, physiotherapy, reablement and adult social care in community settings, and run health visiting and school nursing.

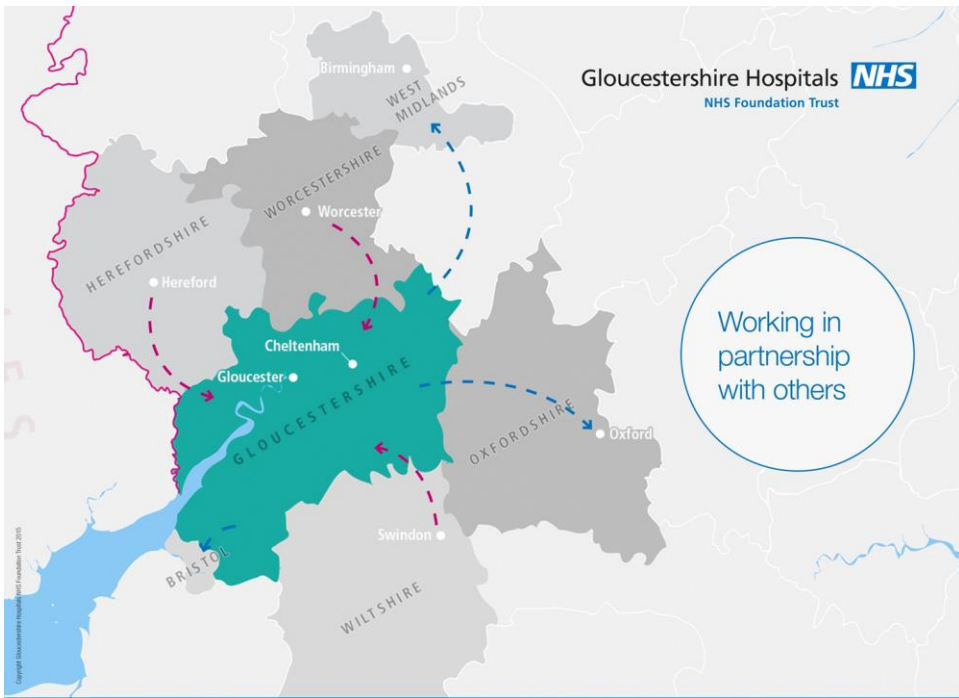
Gloucestershire Hospitals NHS Foundation Trust

Gloucestershire Hospitals NHS Foundation Trust

Provides high quality acute elective and specialist care for a population of more than 612,000 people.

Copyright Gloucestershire Hospitals NHS Foundation Trust 2015

BETTER FOR YOU



Copyright Gloucestershire Hospitals NHS Foundation Trust 2015

BETTER FOR YOU

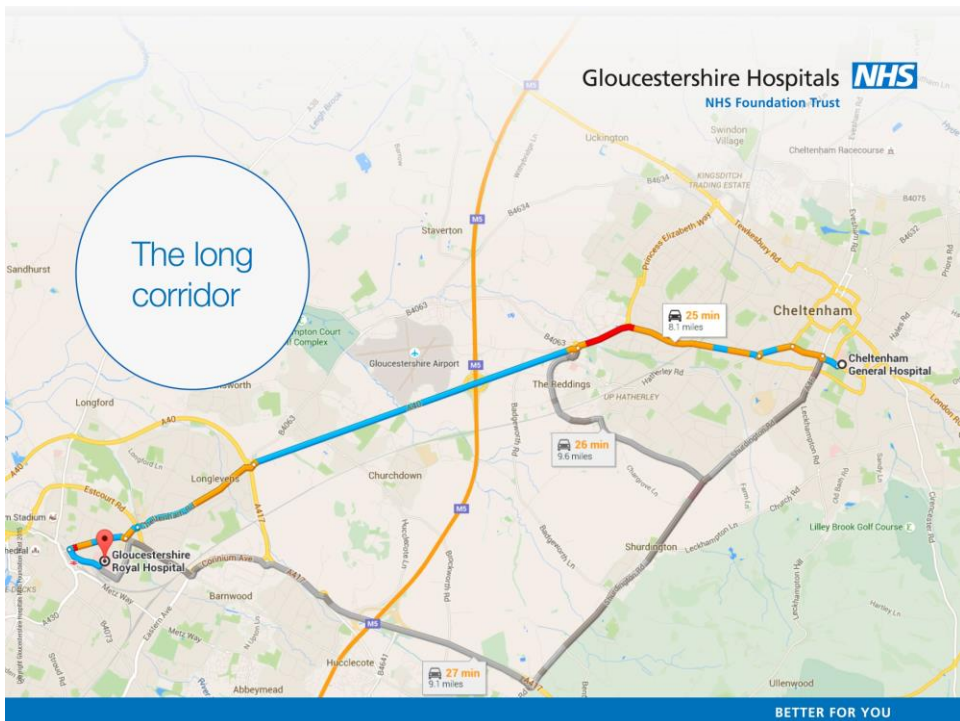
About
our Trust



We operate our services from two main sites that complement each other. Our two hospitals (with a long corridor) give us flexibility and the resilience to deal with unexpected emergency incidents.

Some services are run on both our sites while other specialist services are focused at just one to optimise the use of specialist staff, skills and equipment.

BETTER FOR YOU



Our services

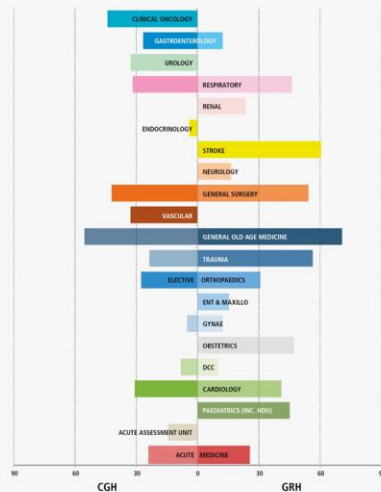
Accident and emergency (A&E)	General Surgery	Paediatric Ophthalmology
Adult Critical Care	Gynaecology	Paediatrics/SCBU
Anaesthetics	Medical oncology	Paediatric surgery
Cardiology	Midwifery	Paediatric T&O
Clinical haematology	Neonatal Critical Care	Paediatric Urology
Clinical immunology	Nephrology	Pain management
Clinical oncology	Neurology	Palliative medicine
Community Paediatrics	Obstetrics	Rehabilitation
Critical Care Medicine	Ophthalmology	Rheumatology
Dermatology	Oral Surgery	Screening programmes
Ear, Nose & Throat (ENT)	Orthodontics	Thoracic medicine
Endocrinology	Paediatric cardiology	Trauma & Orthopaedics
Gastroenterology	Paediatric Endocrinology	Urology
General Medicine	Paediatric ENT	

Copyright Gloucestershire Hospitals NHS Foundation Trust 2015

BETTER FOR YOU

Split of specialist services across our sites

Some specialist departments are concentrated at either Cheltenham General or Gloucestershire Royal hospitals, so that we can make the best use of the expertise and specialist equipment needed.



Copyright Gloucestershire Hospitals NHS Foundation Trust 2015

BETTER FOR YOU

History of
successful
site/ service
reconfiguration

Neutropenia Service to CGH	1994
Interventional Cardiology Service to CGH	1996
ENT to GRH	2000
Ophthalmology to CGH	2000
Paediatric inpatients to GRH	2006
Obstetrics, neonatology & benign gynaecology to GRH	2011
Inpatient urology to CGH	2011
Paediatric emergency assessments to GRH	2011
Major Trauma to Bristol & GRH	2012
Stroke & Transient Ischemic Attack (TIA) to GRH	2012
General & Old Age Medicine (GOAM) balanced	2012
Changes to emergency care pathway	2013
Inpatient vascular surgery to CGH	2013

BETTER FOR YOU

Our process
now (service)



- Clinically driven at a service level
- Develop the vision
 - Standards
 - Staffing
 - Evidence
- Map the pathways for 70% of the activity
- Clinical linkages

BETTER FOR YOU

Clinical linkages



- Who do you need?
- Who needs you?
- For whole pathway
- Test to destruction

Copyright Gloucestershire Hospitals NHS Foundation Trust 2015

BETTER FOR YOU

Our process
(now) clinical stakeholders



- Clinical linkages
- Don't mention site!
- Option(s)
- Impact assessment
- Material for wider engagement

Copyright Gloucestershire Hospitals NHS Foundation Trust 2015

BETTER FOR YOU

Final thoughts



Copyright Gloucestershire Hospitals NHS Foundation Trust 2015

BETTER FOR YOU

Transport



Copyright Gloucestershire Hospitals NHS Foundation Trust 2015

BETTER FOR YOU

Politics



Copyright Gloucestershire Hospitals NHS Foundation Trust 2015

BETTER FOR YOU

Thank you

BETTER FOR YOU