

BNSSG Adult Community Services

Clinical Senate Meeting

19 September 2019





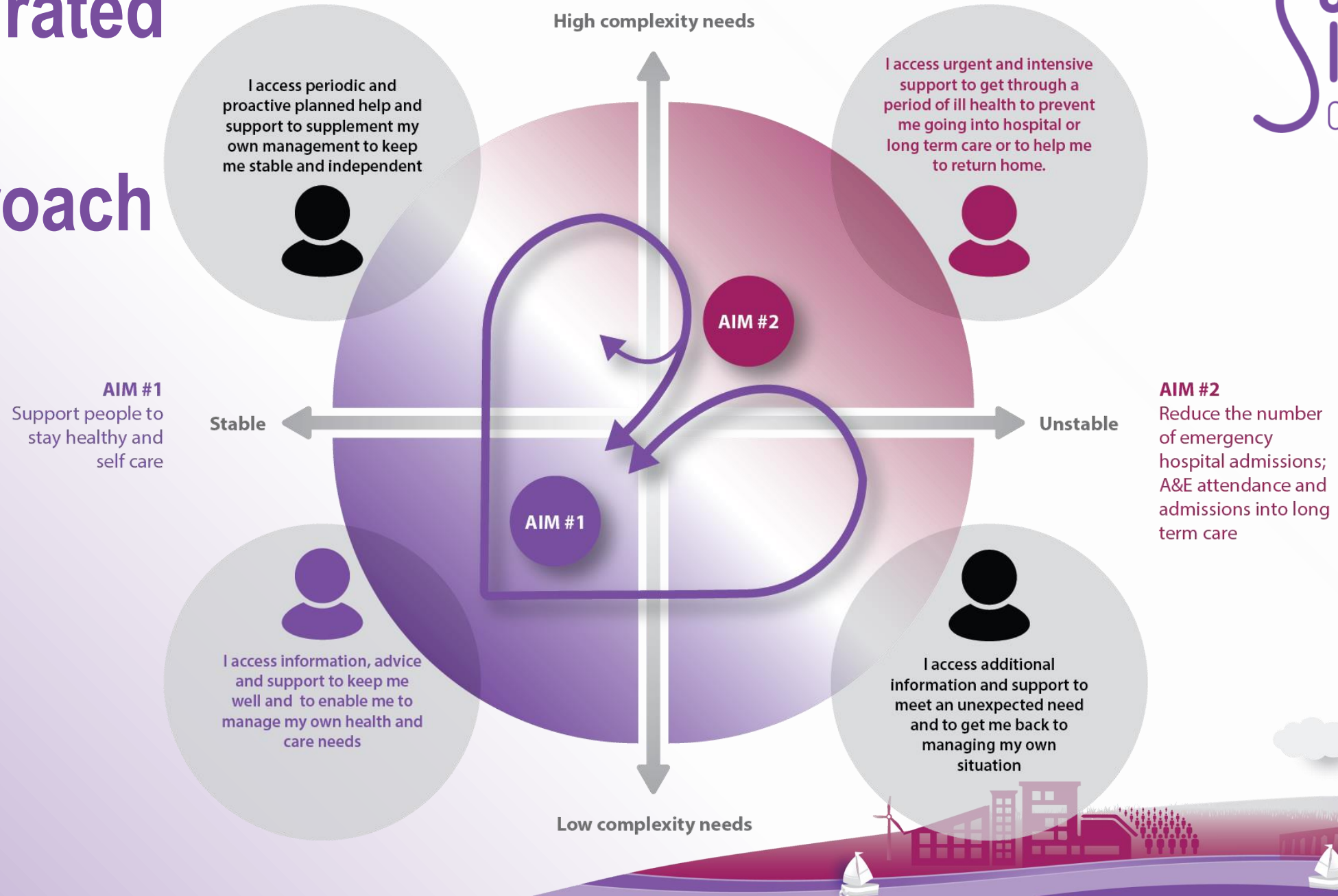
Sirona
care & health

- **Strength**
- **Trust**
- **Courage**
- **Common Sense**



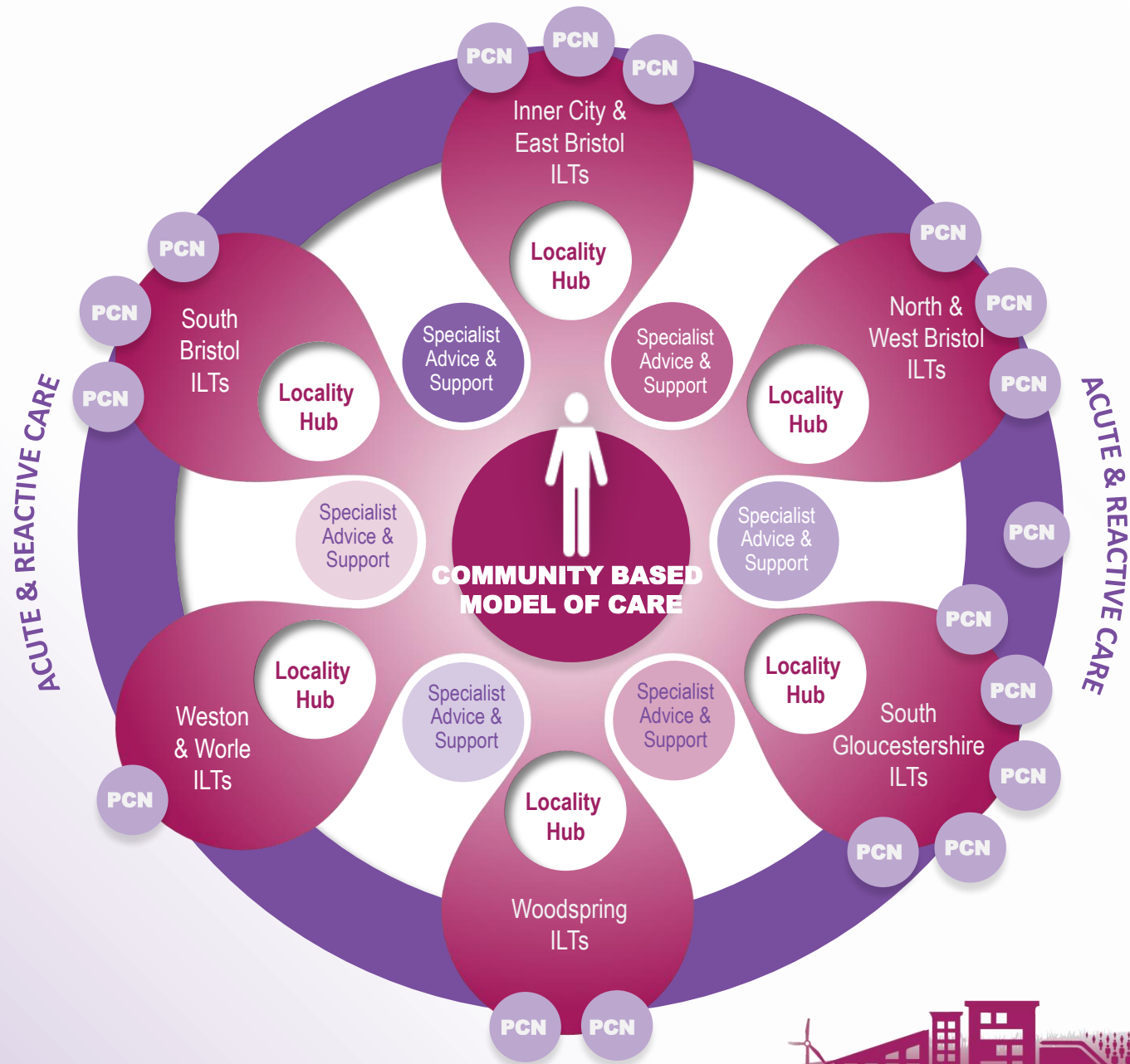
Integrated Care Approach

Sirona
care & health



Community Based Model of Care

- Primary Care Networks (PCNs)
- Locality Hubs
- Integrated Locality Teams (ILTs)
- Acute and Reactive Care
- Specialist advice and support



Integrated Locality Teams



- **Built around GP Practices**
 - Multi-disciplinary
 - Aligned Staff
 - Strong Presence in practices
 - Flexible and integrated working
- **Organised/Managed at Primary Care Network Level**
 - 18 ILTs
 - Mobile Working
- **Membership**
 - Community Matron
 - District & Community Nurses, Therapists plus highly trained support staff
 - Pharmacists
 - Health Visitors for Older People linked to social prescribers
 - Administrative Support
 - Partner Agencies – Social Care; Mental Health; Third Sector
- **Support to Care Homes**
- **Enablers**
- **Closely integrated with Acute & Reactive Services**



Locality Hubs

- **Focus on Health and Wellbeing**
 - Advice and Signposting
 - Links with Third Sector
 - Physical and Virtual
 - Strong use of Digital Technology
- **Co-location of Services**
 - Frailty
 - Secondary Care Outpatients
 - Specialist Services
- **Focus for Locality Based Frailty Service**
 - Frailty Day Assessment Units – “Chairs”



Acute & Reactive

➤ Focus on Urgent Care

- Emergency Care Practitioners
- Advanced Healthcare Practitioner
- Frailty Day Assessment Units – “Chairs”
- Close working with secondary care

➤ Single Point of Access

- Single number and e-mail address
- Standardised Operating Procedures
- Alignment with ICB

➤ Urgent Treatment Centres

➤ Opportunities for joined up Out of Hours Services

➤ Close alignment with ILTs

➤ Community Beds

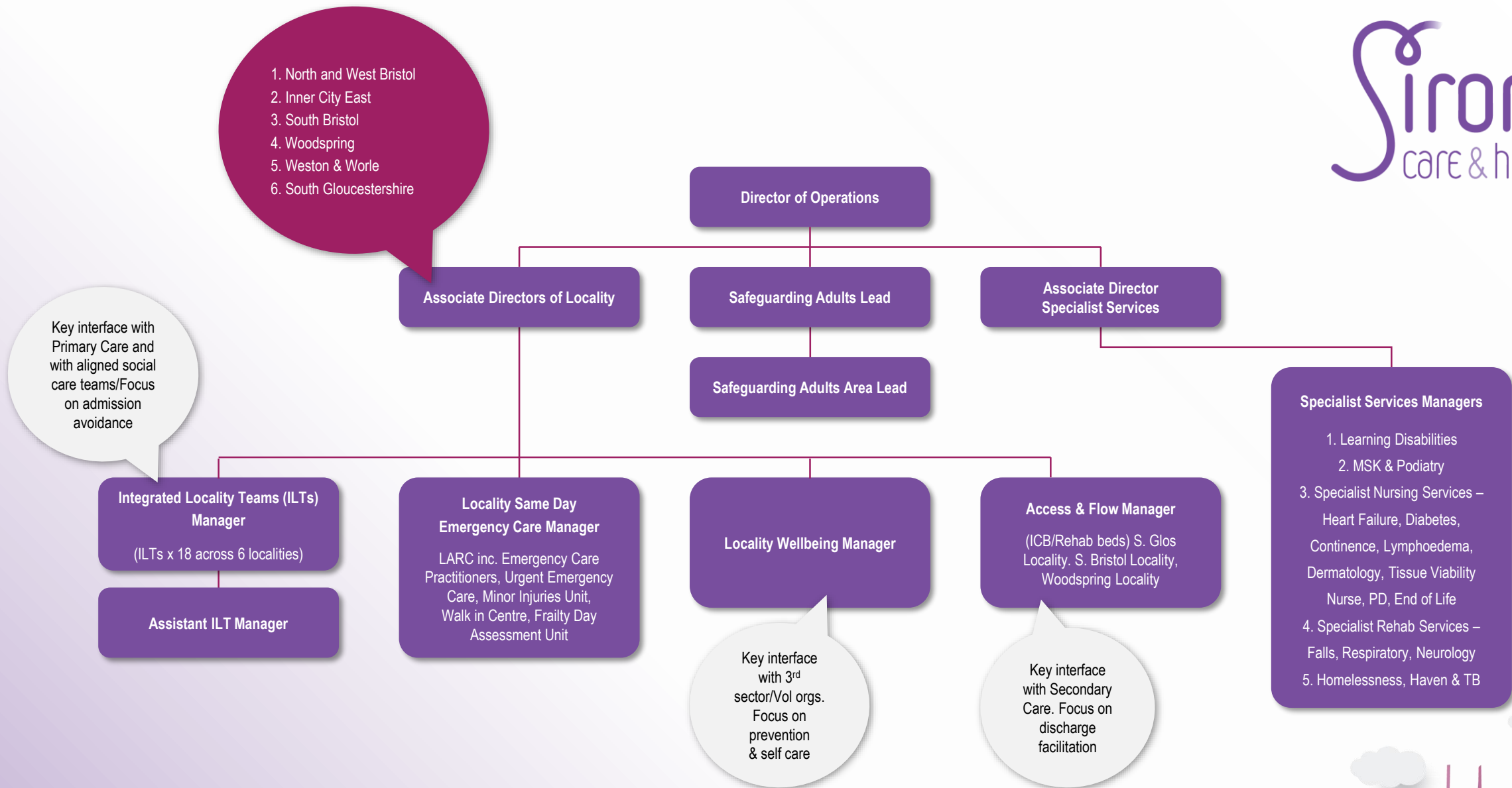
- 21 days Length of Stay
- Mixed Provision to include
 - Step Up
 - Step Down
 - Safe Haven
 - Rehabilitation



Specialist Advice & Support

- Highly Trained Specialist Staff across 14 key areas
- Advice and Support to all professionals working in locality
 - Direct advice
 - Education and training
 - Joint provision of services
- Direct care for very complex conditions
- Aligned to ILTs/Locality Hubs
 - Centrally managed; locally provided
- Alignment with secondary care
 - Including 24/7 cover
- Levelling up to achieve consistency across BNSSG





Summary

- Joining up and building resilience across the system
- Strengths Based; Focus on Prevention & Early Intervention; Promoting Independence
- As much local autonomy as possible within constraints of organisational imperatives; performance measures; best use of resources; safe and effective care
- New ways of working
 - flexible, across organisations including workforce
 - Integrated care providers/agreement
- We don't have all the answers – lots of ideas and experience and willing to learn; flex; respond; experiment

